



INSTRUCTIONS

www.zodiac.nl

For model fitment information, see the Zodiac Online Catalog at <https://catalog.zodiac.nl> (available in English, German, French, Spanish and Italian)

IMPORTANT INFORMATION ON HARLEY-DAVIDSON MODEL YEARS

Zodiac uses the MODEL year in product descriptions and application data. The date on European vehicle documents does not indicate the model year but the date the vehicle has been registered as being sold for the first time.

Since 1981 Harley-Davidsons have a 17-digit VIN (Vehicle Identification Number).

Model years 1981 through 2002: All Harleys have a VIN starting with **1HD**

Model years 2003 and later: European and other bikes built for sales outside the USA have a VIN starting with **5HD**

Bikes built for sales in the US Domestic Market have a VIN starting with **1HD**

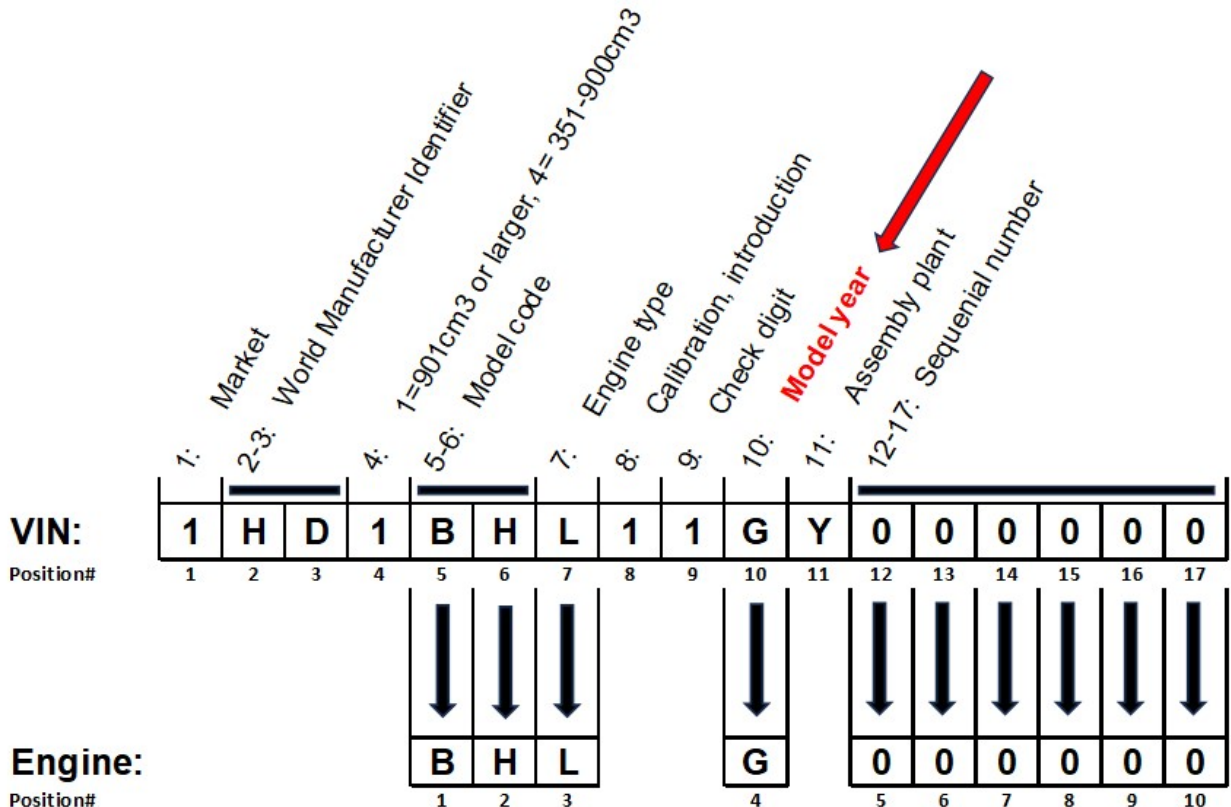
The 10th digit in the VIN and the 4th digit in the crankcase indicate the model year:

1 = 2001	9 = 2009	H = 1987 or 2017	S = 1995
2 = 2002	A = 2010	J = 1988 or 2018	T = 1996
3 = 2003	B = 1981 or 2011	K = 1989 or 2019	V = 1997
4 = 2004	C = 1982 or 2012	L = 1990 or 2020	W = 1998
5 = 2005	D = 1983 or 2013	M = 1991 or 2021	X = 1999
6 = 2006	E = 1984 or 2014	N = 1992 or 2022	Y = 2000
7 = 2007	F = 1985 or 2015	P = 1993 or 2023	
8 = 2008	G = 1986 or 2016	R = 1994 or 2024	

0 (zero), O (Oscar), I (India), Q (Quebec) and U (Utah) are not used as model year codes.

Crankcase serial numbers are 10 digits and an abbreviation of the VIN on the frame:

Arrows below indicate which digits from the VIN appear where in the crankcase.



VIN numbers can be checked at <https://serviceinfo.harley-davidson.com/sip/>